

CERTIFICATE OF LOCATION OF GOVERNMENT CORNER

NORTHEAST Corner of Section 25, Township 108N, Range 39W

5th Principal Meridian, State of Minnesota, County of MURRAY

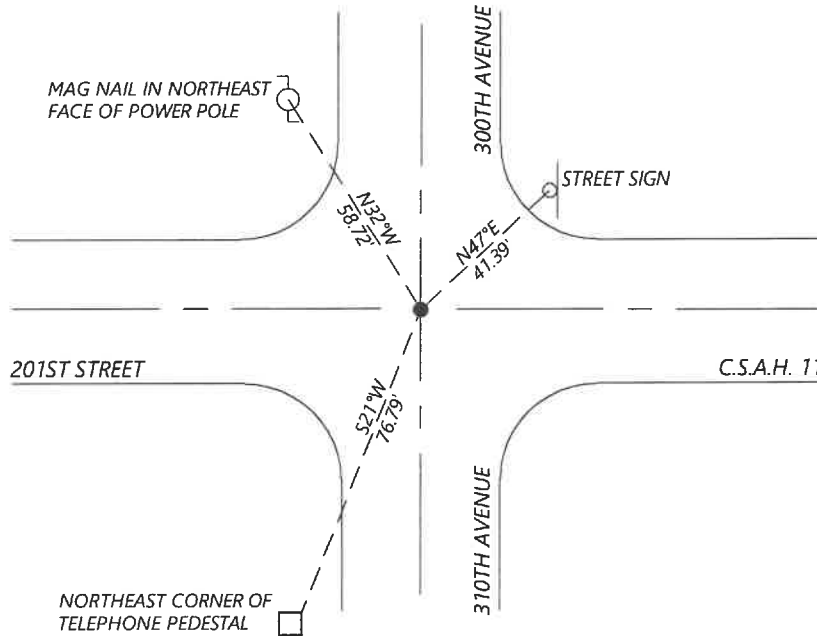
At the corner location shown on the sketch:

On 8/28/2020 found a MAG NAIL FLUSH IN BITUMINOUS AND NO. 6 REBAR WITHOUT CAP 1.6FT BELOW GRADE.
DATE

left monument as found lowered monument removed monument (explain)

On _____ placed a _____
DATE

SKETCH OF REFERENCE TIES



N.T.S.

Statement of evidence for this corner location is on back of this page.

I hereby certify that this document was researched and prepared by me or under my direct supervision and that I am a licensed Land Surveyor under the laws of the State of Minnesota.

Signature [Handwritten Signature]

Date 6/17/2021 License No. 45874

Title:

- Land Surveyor Professional Engineer
- County Surveyor County Engineer

OFFICE OF THE COUNTY RECORDER

County of Murray

I hereby certify that this document was filed in the Co.

Recorder's office at _____ M. on the _____ day of _____ A.D. 20

County Recorder [Handwritten Signature: Karen Brown]

by JUN 22 2021, Deputy

DOCUMENT NO. _____

Statement of Evidence:

Northeast Corner of Section 25, Township 108 North, Range 39 West, 5th Principal Meridian, Murray County, Minnesota.

No GLO Notes.

1895 October, SR Book A, Pg 145 (Cottonwood County) shows a granite stone with marked X at the corner.

Undated, Survey record for Section 24 shows a stone or iron pipe at the corner.

Tack in corner post	SE	47.3ft
Tack in corner post	NE	40.8ft

1900 Cottonwood County resurvey shows a distance of 2640ft to the West Quarter corner of Section 30 and 2659ft to the West Quarter corner of Section 19.

1972 January, Cottonwood County CSAH 11 road plans show an iron pipe at the corner, station 0+00. The North Quarter corner of Section 30 is shown at station 25+74.80.

1989 June, Murray County Highway Department records show they located a 2" steel pipe and placed a $\frac{3}{4}$ " rebar at the corner.

NE corner of telephone pedestal	SW	66.58ft
Nail & cap in power pole	NW	49.53ft

2020 September, Westwood Professional Services searched and found a $\frac{3}{4}$ " rebar without a cap. The rebar fits the road stationing well per 1972 Cottonwood County road plans, as well as the 1900 Cottonwood County resurvey distances. I accepted the found monument and set new reference ties.

Analysis of the recovered data, field evidence and survey measurements, indicates that the monument found is the correct perpetuation of this corner. For additional information concerning this corner please contact Westwood Professional Services.